

Brannock & Patek

Gatherings

Simple
Classic
Style

Quilt by Debbi Duckworth

moda

Brannock & Patek

Gatherings



Size: Finished quilt measures 70" x 86"
Blocks measure 16" finished

All instructions include seam allowance. Please read instructions before beginning this project.

Cutting Directions:

BACKGROUND SQUARES — 192 TOTAL

Cut 192 squares 4½" x 4½" from the assorted plaids and wovens.
These are the backgrounds for the small squares in each block.

SQUARES FOR CURVED TEMPLATE APPLIQUE — 196 TOTAL

Cut 4½" x 4½" squares of the following:

48 tans and yellows — these are for the 4 corners of each large block.

64 assorted reds — set aside 4 red squares for border corners

48 assorted blues

36 assorted greens

Using the enclosed template mark all squares and prepare for applique.



Fabrics:

From the Gatherings Collection by Brannock and Patek choose the following:

7 Reds — 1¼ yds. total

6 Blues — 1 yd. total

6 Greens — ¾ yd. total

Assorted yellows and tans — 1 yd. total

Assorted tan plaids and wovens — 3¼ yds. total

Border #1 — We suggest fabric # 561-16 which has a stripe with words running the length of the fabric. For easy of piecing, buy 2 yds. of "word" fabric for a continuous border with extra fabric, or choose 1¼ yds. of "word" fabric, piece the border stripes and have no extra fabric.

Border #2 — 1¾ yd. Red Floral(#560-18)

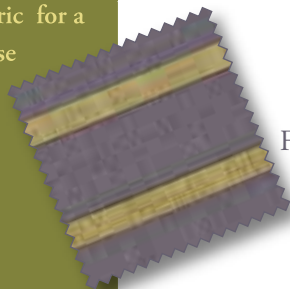
Binding — ⅝ yd. (#571-16)

Backing — 5 yds. (We suggest #12503-25)

Block Construction – Appliqué

Using your favorite appliqué method, appliqué the curved templates to the 4½" x 4½" squares. You will need to make 192 of these. There are 12 blocks in the quilt with 16 small squares in each large block. The quilt was made using the needle turn method to hand appliqué. But machine appliqué, fusing with a buttonhole stitch around the curved edge, or the Curve Master Presser foot will work just as well.

Remember this is a scrappy quilt. Be sure to be random when placing both the background squares and the curved pieces. The more random the placement the better the quilt will look.



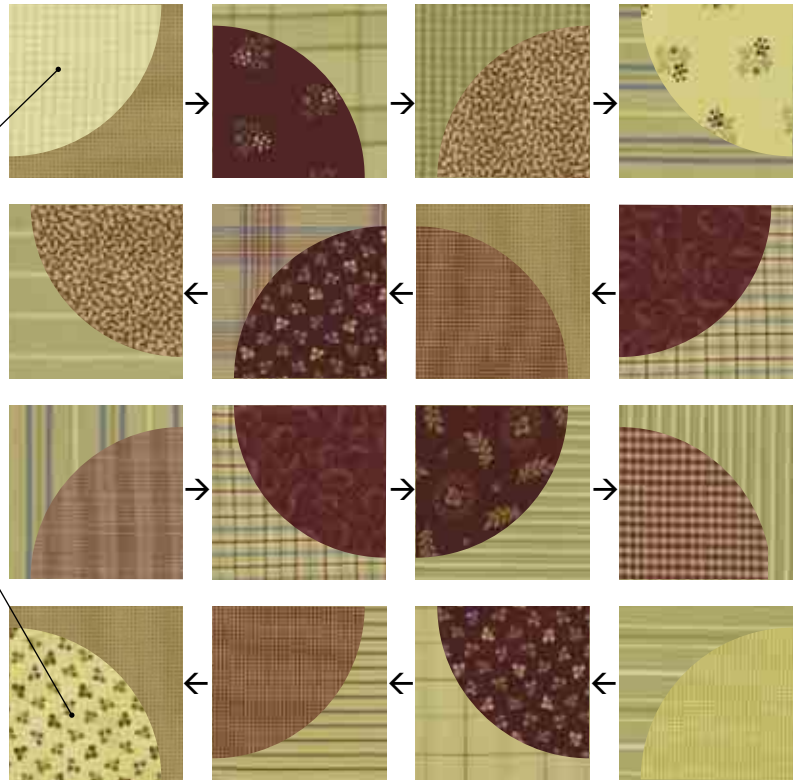
Fabric # 561-16

Block Construction – Piecing

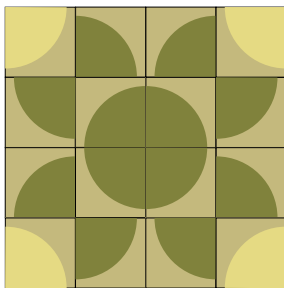
Arrange the 16 small squares in the “flower” pattern, refer to quilt diagram for color placement. Sew the 16 small squares together to form one large block (16½" x 16½").

Make sure that the yellow appliqued corner blocks are always facing outward.

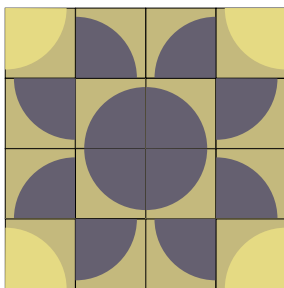
Press seams in direction of arrows for easy piecing.



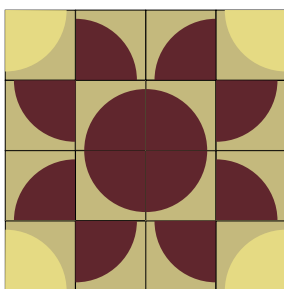
Block should measure 16½" x 16½" unfinished.



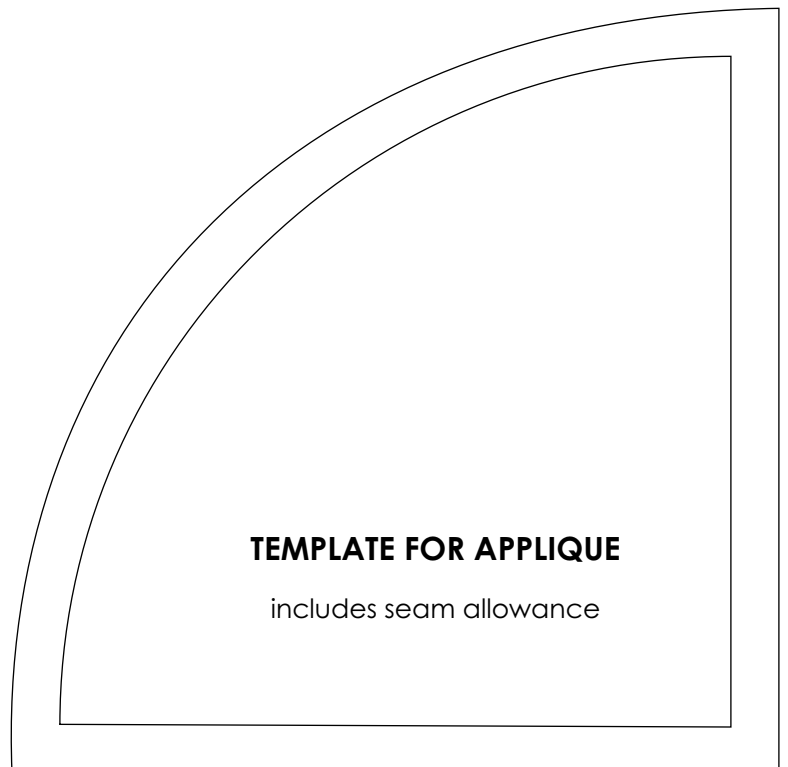
MAKE 3 GREEN BLOCKS.



MAKE 4 BLUE BLOCKS.



MAKE 5 RED BLOCKS.



TEMPLATE FOR APPLIQUE

includes seam allowance

moda

PS 560 — SUGGESTED RETAIL \$2.00



Assemble Quilt

Sew the large “flower” blocks together in rows — 3 blocks across and 4 down.

The quilt top without borders should measure $48\frac{1}{2}$ " x $64\frac{1}{2}$ ".

Borders

BORDER #1

Note: Directions below are for one continuous length of fabric. If you purchase less yardage, border strips will need to be pieced to get the measurements given.

- Trim 4 remaining red squares to $3\frac{1}{2}$ " x $3\frac{1}{2}$ "
- Cut 2 strips $48\frac{1}{2}$ " x $3\frac{1}{2}$ " from the length of the border fabric. When cutting strips be sure to note location of the “word” stripe and use the same placement for each border piece. Sew to the top and bottom of your quilt top.
- Cut 2 strips $64\frac{1}{2}$ " x $3\frac{1}{2}$ " from the length of the border fabric. Add $3\frac{1}{2}$ " x $3\frac{1}{2}$ " red corner post to each end of border strip and sew to the sides of the quilt base.

The quilt top with one border should measure $54\frac{1}{2}$ " x $70\frac{1}{2}$ ".

BORDER #2

- Cut 6 strips $8\frac{1}{2}$ " x WOF. To determine the length of the side borders, measure the quilt top through the vertical center. Using the 6 strips, piece 2 border strips to this measurement, piecing and trimming strips when needed to attain the required length.
- Mark the center of the border strips and the sides of the quilt top with pins.
- With right sides together, pin the border strips to the quilt top matching center pins and ends. Stitch the borders to the quilt top. Press the seams toward the border. Repeat for top and bottom.

Press and Quilt as desired.

